



# OYSTER SHELL RECYCLING PROGRAM

## A SHUCK'S JOURNEY



### 1 SLURP

Enjoy your oyster knowing that your used oyster shells will help support the Partnership for the Delaware Estuary's Oyster Shell Recycling Program. The collected shells are placed back in the Delaware Bay benefitting the environment and our communities!

### 2 COLLECT

The Partnership for the Delaware Estuary collects shells previously destined for landfills from restaurants in our area.

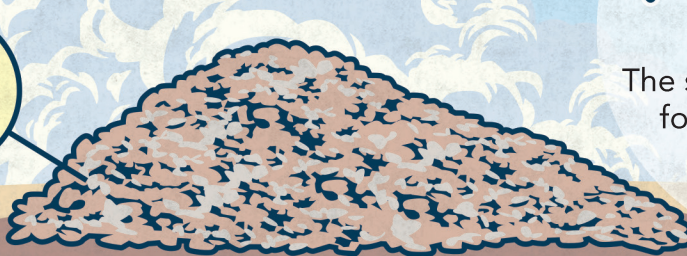


### 3 PREP

The shells are prepared for reuse in the Bay's oyster beds.

### 4 REUSE

Volunteers and experts return the shells to local bay shores.



### 5 BENEFIT

Oysters provide habitat for fish and wildlife and filter up to 10 gallons of water per day.



♻️ Printed on recycled paper

Our Partners:



Connecting people, science, and nature for a healthy Delaware River and Bay